

THE
MOTOR CYCLE
INDUSTRY
ASSOCIATION

2017

Statistical Pocket Guide v4

The UK Motorcycle Industry in a Nutshell

Based on data available at the time of production

Definitions

VEHICLE TYPES

Powered Two Wheeler

All types of two-wheeled motor vehicle, including Mopeds, Motorcycles, Scooters, etc.

Mopeds

In law, a motorised two-wheeled vehicle with an engine capacity of less than 50cc and a maximum speed capability of 30mph, riders must be aged 16 years or over. Mopeds are available in Motorcycle and Scooter styles.

Motorcycle

In law, a motorized two-wheeled vehicle that is not a moped, riders must be aged 17 years or over.

STYLES

AdventureSport (including Supermoto)

These bikes are similar in style to Trail/Enduro motorcycles but are predominantly designed and capable of on-road use. Often they will have features similar to machines included in the Touring category e.g. fairings, luggage carrying capacity etc.

Custom

These machines include 'cruisers' and 'choppers'. They have flat but typically feature high handlebars, low seat height and forward footrests. Body panels and fittings contain high polished chrome content.

Naked

Machines are built to a basic specification with no fairing (or only a small handlebar fairing) and an upright riding position. Engines are large to medium and often called retro.

Sport/Touring

Machines that fit between the SuperSport and Touring categories. Typical features include full or partial fairings and practical rider and pillion seating with low to medium ride handlebars. Tend to have medium to large capacity engines.

SuperSport

These machines are designed to mimic or directly replicate racing bikes. They normally have full fairings and low handlebars and are sometimes referred to as race replicas.

Scooters

Have an engine, as an integral part of the rear suspension or the chassis is a step-through type, irrespective of cc or wheel size. Includes all types of transmission.

Touring

Bikes generally have large engines and are designed for long-distance riding. Typical features include a more comfortable seating position for rider and pillion, luggage carrying capability and weather protection, such as fairings with a fixed or adjustable windscreen.

Trail/Enduro

These bikes encompass trials, enduro and trail bikes with an off-road or cross-country capability.

UK REGISTRATIONS

ANNUAL NEW MOTORCYCLE & MOPED REGISTRATIONS

Source: MCI/MCRIS

MOTORCYCLES	2007	% Change	2008	% Change	2009	% Change	2010	% Change	2011	% Change	2012	% Change	2013	% Change	2014	% Change	2015	% Change	2016
0 - 100cc	2745	-23.1%	2110	-61.6%	810	-35.9%	519	-24.7%	391	-31.5%	268	-39.2%	163	-42.3%	94	14.9%	108	139.8%	259
101 - 125cc	39211	-1.9%	38456	-23.6%	29385	-5.9%	27662	17.3%	32442	8.7%	35270	-3.2%	34128	11.0%	37871	15.5%	43749	15.8%	50658
126 - 500cc	10225	-1.0%	10126	-28.3%	7264	-18.6%	5910	-3.0%	5732	6.8%	6123	40.2%	8584	7.7%	9247	15.3%	10662	23.4%	13159
501 - 700cc	23011	-9.8%	20752	-8.0%	19083	-28.1%	13719	-25.9%	10166	6.5%	10826	-11.9%	9539	-3.2%	9232	3.7%	9569	12.5%	10769
701 - 900cc	8017	11.5%	8937	-5.8%	8416	-14.8%	7174	19.9%	8599	-7.9%	7923	7.8%	8543	34.1%	11457	26.9%	14542	-12.0%	12795
Over 900cc	36728	-6.8%	34242	-12.6%	29941	-11.8%	26406	-16.4%	22074	-10.1%	19844	1.9%	20221	12.6%	22778	15.0%	26185	19.7%	31350
Total Motorcycles	119,937	-4.4	114,623	-17.2	94,899	-14.2	81,390	-2.4	79,404	1.1	80,254	1.2	81,178	11.7	90,679	15.6	104,815	13.5	118,990
Total Mopeds	24603	1.9%	25065	-33.8%	16587	-12.5%	14517	-0.5%	14443	-7.1%	13412	-20.0%	10730	-1.2%	10598	-11.8%	9345	-6.8%	8712
Total PTW	144,540	-3.4	139,688	-20.2	111,486	-14.0	95,907	-2.1	93,847	-0.2	93,666	-1.9	91,908	10.2	101,277	12.7	114,160	11.9	127,702

ANNUAL NEW MOTORCYCLE REGISTRATIONS BY STYLE

Source: MCI/MCRIS

MOTORCYCLE STYLE	2007	% Change	2008	% Change	2009	% Change	2010	% Change	2011	% Change	2012	% Change	2013	% Change	2014	% Change	2015	% Change	2016
Scooter	22444	0.7%	22611	-25.6%	16827	-6.2%	15787	20.2%	18969	10.8%	21026	-4.4%	20095	7.1%	21524	6.7%	22972	19.6%	27480
Trail/Enduro	8610	-15.2%	7305	-26.1%	5396	-13.2%	4685	-13.3%	4060	3.4%	4198	8.6%	4558	8.1%	4928	13.2%	5580	20.6%	6732
Naked	21956	-2.3%	21453	-0.7%	21300	-16.2%	17839	-3.6%	17203	0.0%	17197	4.4%	17951	32.1%	23718	27.0%	30126	18.3%	35652
Sport/Tour	11021	-8.4%	10091	-17.4%	8338	-9.8%	7518	-32.4%	5084	-13.8%	4384	-7.9%	4037	1.5%	4097	0.3%	4110	-4.0%	3946
Supersport	25904	-9.3%	23486	-19.3%	18964	-24.8%	14257	-9.8%	12853	-3.8%	12360	-5.2%	11719	1.8%	11931	11.6%	13314	1.3%	13485
Touring	3856	9.0%	4204	-12.8%	3667	-11.4%	3249	-14.5%	2778	-22.9%	2142	27.4%	2728	13.0%	3082	-15.7%	2598	-6.4%	2431
Custom	12349	-9.9%	11125	-16.4%	9297	-10.6%	8308	-5.3%	7870	-13.0%	6850	6.5%	7297	11.4%	8126	14.1%	9270	14.2%	10589
Adventure	12339	7.8%	13304	-20.8%	10538	-11.7%	9310	9.6%	10207	15.3%	11765	7.1%	12603	4.2%	13129	26.8%	16654	11.1%	18500
Unspecified	1458	-28.4%	1044	-45.2%	572	-23.6%	437	-13.0%	380	-12.6%	332	-42.8%	190	-24.2%	144	32.6%	191	-8.4%	175
Total Motorcycles	119,937	-4.4	114,623	-17.2	94,899	-14.2	81,390	-2.4	79,404	1.1	80,254	1.2	81,178	11.7	90,679	15.6	104,815	13.5	118,990

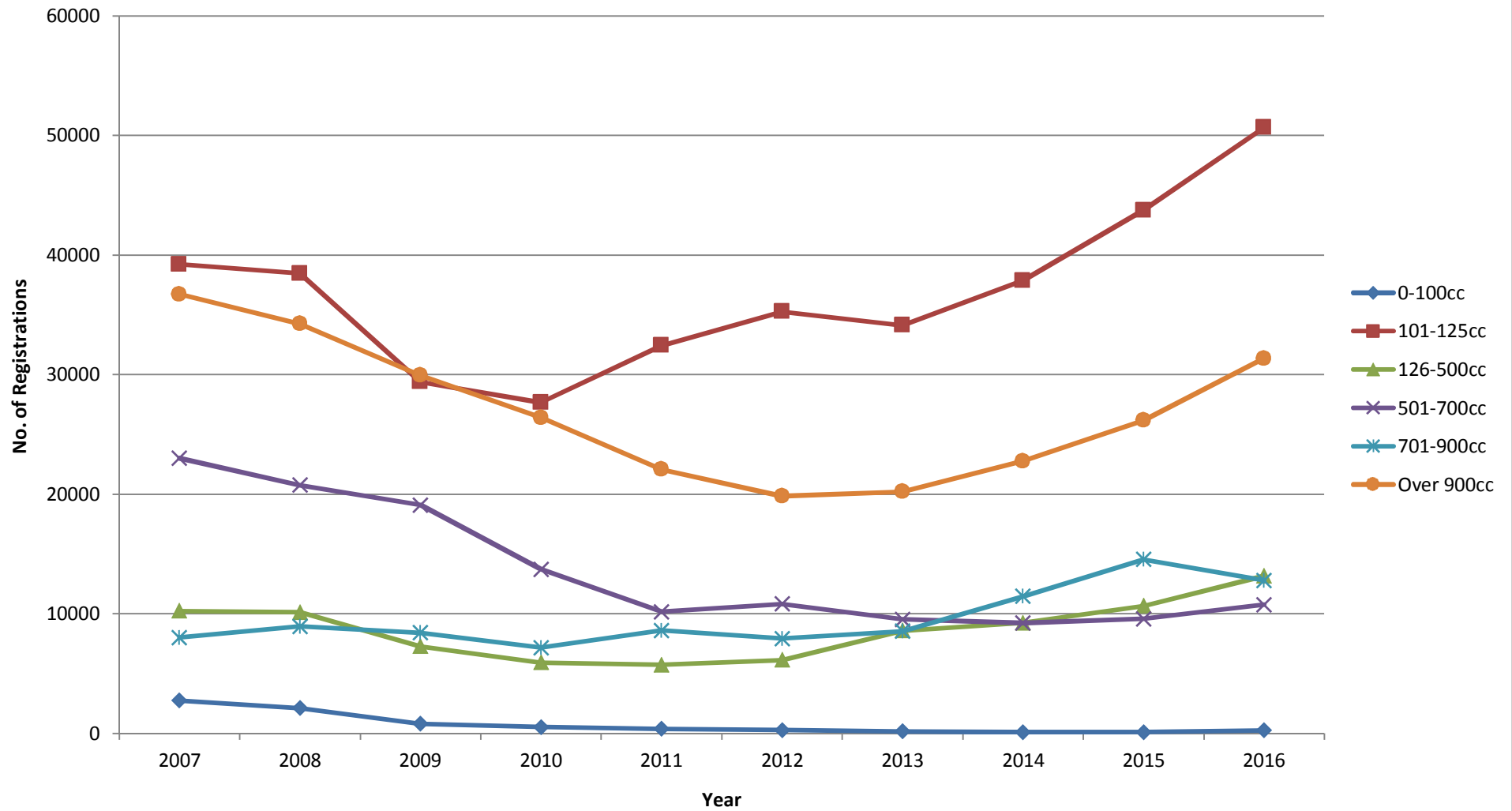
ANNUAL NEW MOPED REGISTRATIONS BY STYLE

Source: MCI/MCRIS

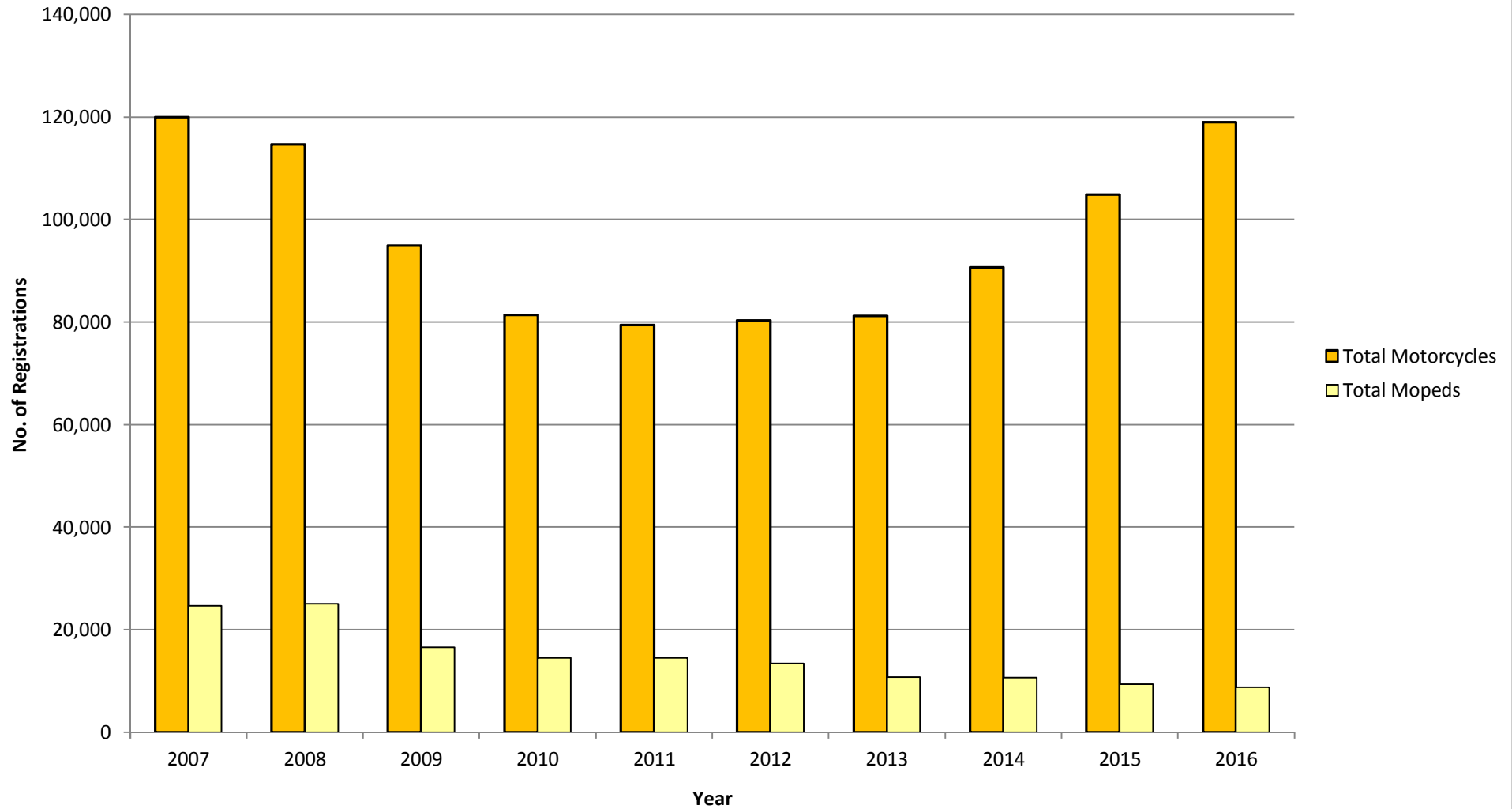
MOPED STYLE	2007	% Change	2008	% Change	2009	% Change	2010	% Change	2011	% Change	2012	% Change	2013	% Change	2014	% Change	2015	% Change	2016
Sports	1486	-3.0%	1441	-38.0%	894	-27.5%	648	-11.6%	573	-2.6%	558	-21.3%	439	3.6%	455	-15.6%	384	-9.1%	349
Scooter	22171	1.1%	22410	-33.3%	14946	-11.8%	13176	1.5%	13379	-6.2%	12549	-20.6%	9970	-2.0%	9766	-12.0%	8596	-8.1%	7898
Naked	842	29.8%	1093	-38.0%	678	-4.1%	650	-30.5%	452	-36.5%	287	9.4%	314	16.6%	366	-5.2%	347	30.8%	454
Unspecified	104	16.3%	121	-43.0%	69	-37.7%	43	-9.3%	39	-53.8%	18	-61.1%	7	57.1%	11	63.6%	18	-38.9%	11
Total Mopeds	24,603	1.9	25,065	-33.8	16,587	-12.5	14,517	-0.5	14,443	-7.1	13,412	-20.0	10,730	-1.2	10,598	-11.8	9,345	-6.8	8,712

N.B. All the data in this report is refreshed annually to reflect improvements in data mostly related to style
 Registrations = Registrations of new powered two wheelers for the road.

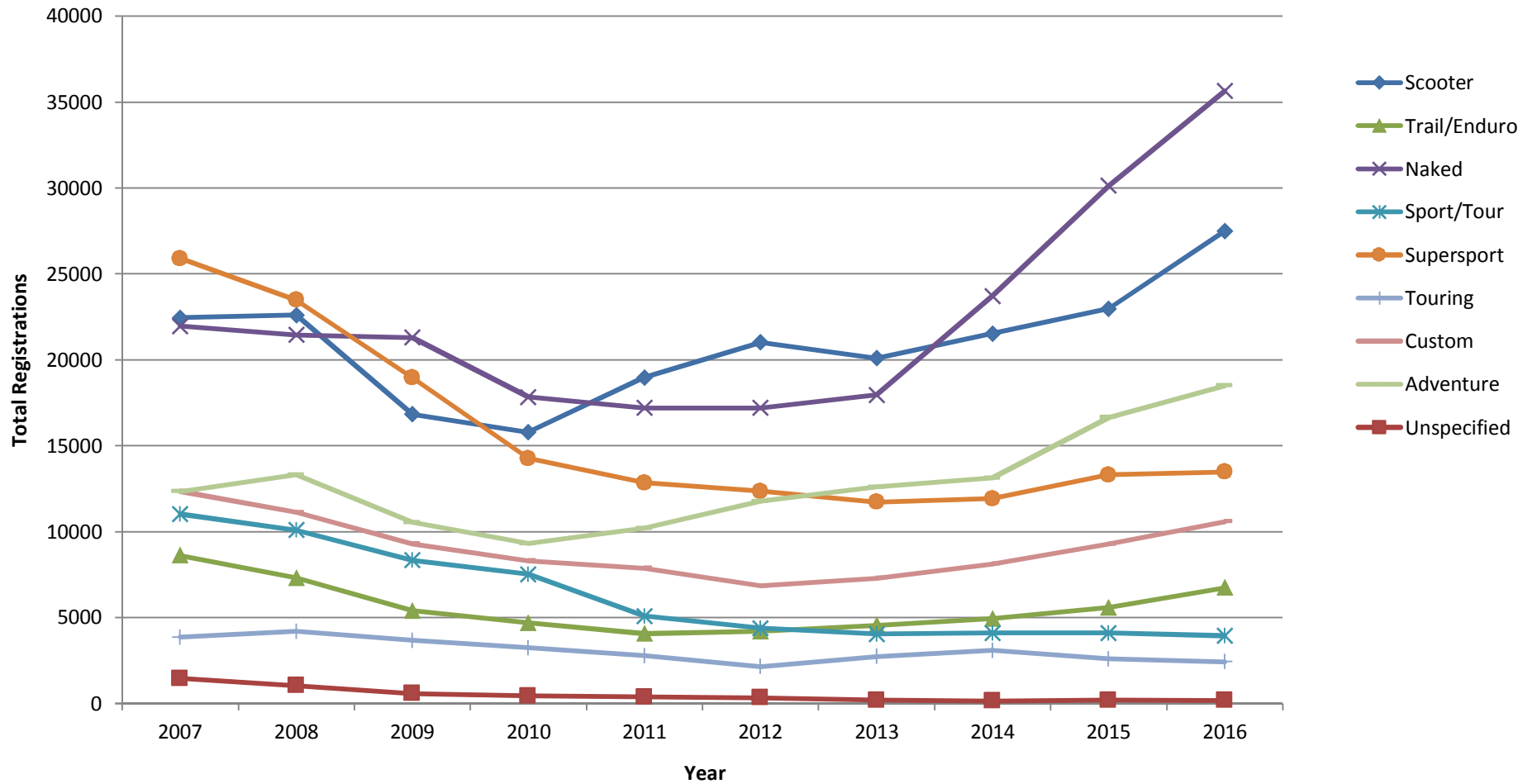
Annual New UK Motorcycle Registrations by CC



Annual New UK Motorcycle and Moped Registrations



Annual New Motorcycle Registrations By Style



Moped & Motorcycle Parc

TWO WHEELED VEHICLES IN USE (PARC) IN GREAT BRITAIN

Source: MCI / MCRIS

MOTORCYCLES	2007	% Change	2008	% Change	2009	% Change	2010	% Change	2011	% Change	2012	% Change	2013	% Change	2014	% Change	2015	% Change	2016
0 - 100 cc	51.4	-8.6	47.0	-2.6	45.8	-8.3	42.0	-3.8	40.4	-6.2	37.9	-5.0	36.0	-6.7	33.6	-8.0	30.9	-6.5	28.9
101 - 125 cc	221.2	4.0	230.0	6.1	244.0	1.8	248.3	5.2	261.3	5.7	276.3	3.1	285.0	3.3	294.5	1.6	299.3	4.9	314.1
126 - 500 cc	219.4	-2.5	214.0	0.7	215.4	-1.1	213.0	-0.1	212.7	0.1	212.9	3.1	219.5	0.9	221.4	-0.3	220.8	2.2	225.6
501 - 700 cc	295.9	-1.7	290.9	2.2	297.2	-2.3	290.4	-2.3	283.7	-2.0	277.9	-1.1	274.9	-1.7	270.1	-2.7	262.8	-1.1	260.0
701 - 900 cc	158.3	-2.0	155.1	1.5	157.4	-1.8	154.5	0.3	155.0	-0.9	153.6	1.3	155.6	2.9	160.1	3.8	166.2	3.2	171.5
Over 900 cc	350.3	2.0	357.4	5.1	375.7	0.6	378.1	-0.2	377.2	-0.7	374.4	0.9	377.8	1.8	384.7	1.7	391.2	3.5	404.9
Total Motorcycles	1296.5	-0.2	1294.4	3.2	1335.5	-0.7	1326.3	0.3	1330.3	0.2	1333.0	1.2	1348.8	1.2	1364.4	0.5	1371.2	2.5	1405.0
Scooters +	INCL		INCL		INCL		INCL		INCL		INCL		INCL		INCL		INCL		INCL
Total Mopeds	170.7	-7.7	157.5	-4.3	150.8	-6.3	141.3	-2.0	138.5	-3.2	134.1	-7.2	124.5	-10.0	112.1	-13.5	97.0	-10.3	87.0

Data in Thousands.

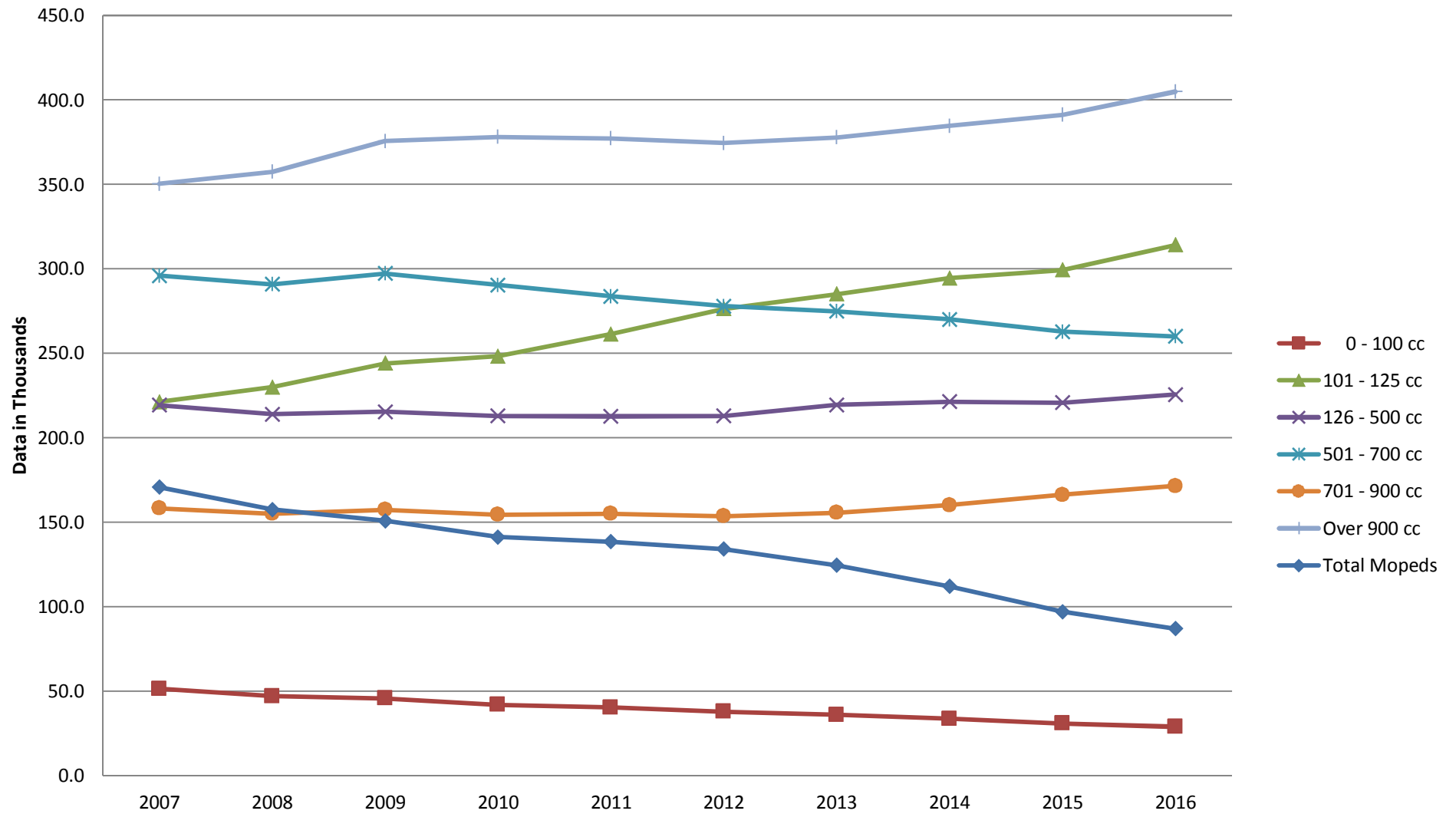
Data only available 6 months after the period it relates to.

Source: Society of Motor Manufacturers and Traders (SMMT) December Census.

PARC = Number of vehicles currently licensed including vehicles previously licensed in preceding 6 months.

+Scooter registrations included within relevant category (i.e. moped or motor cycle).

Moped & Motorcycle Parc



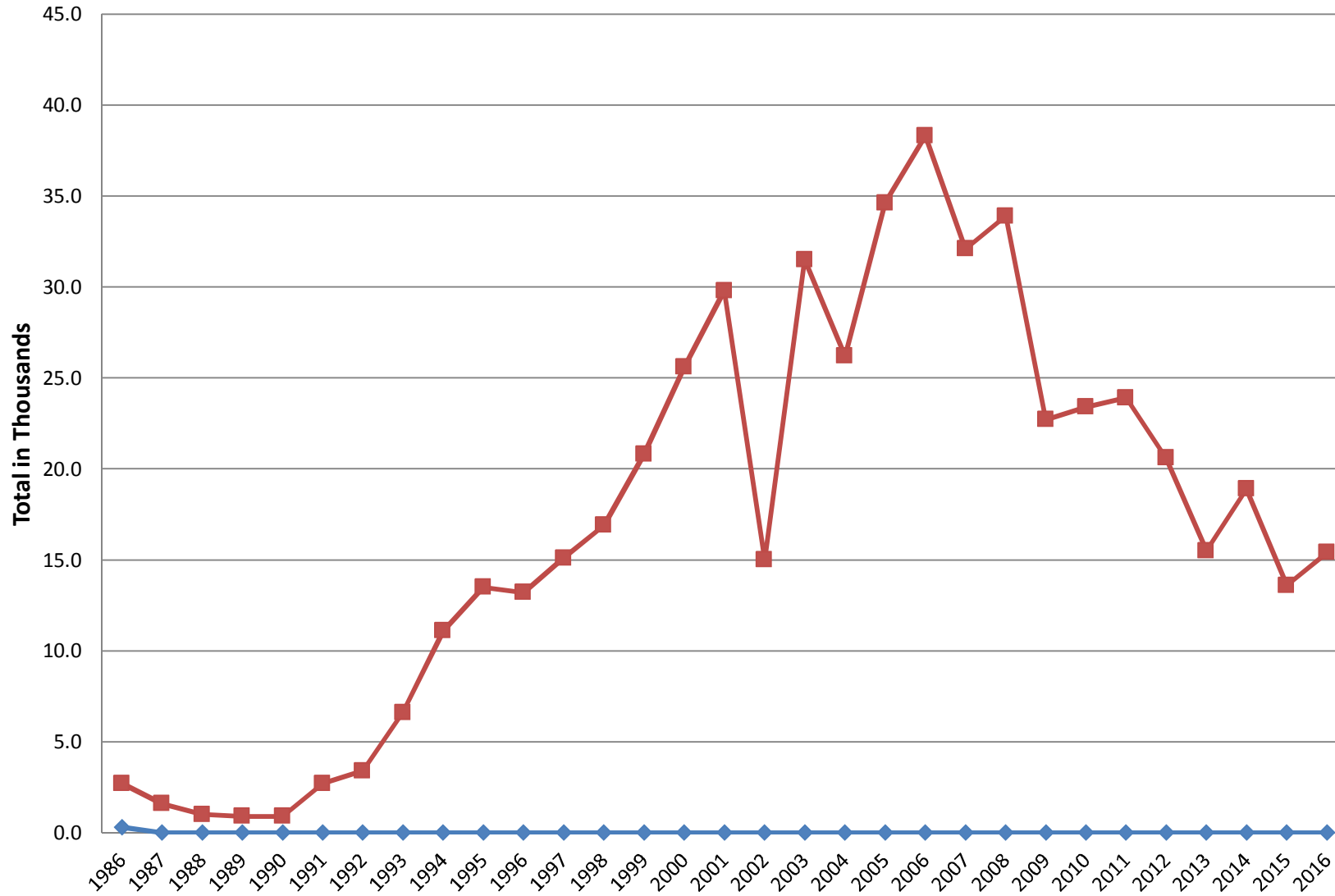
PRODUCTION, IMPORTS & EXPORTS

PRODUCTION, IMPORTS & EXPORTS														
YEAR	PRODUCTION		IMPORTS						EXPORTS (including re-exports)					
	MOPED	MC's	MOPEDS			MOTORCYCLES			MOPEDS			MOTORCYCLES		
	TOTAL	TOTAL	JAN - JUN	JUL - DEC	TOTAL	JAN - JUN	JUL - DEC	TOTAL	JAN - JUN	JUL - DEC	TOTAL	JAN - JUN	JUL - DEC	TOTAL
1986	0.3	2.7	n/a	n/a	27.5	n/a	n/a	79.3	n/a	n/a	0.3	n/a	n/a	13.5
1987	0.0	1.6	n/a	n/a	24.7	n/a	n/a	74.1	n/a	n/a	0.3	n/a	n/a	12.9
1988	0.0	1.0	n/a	n/a	25.5	n/a	n/a	90.6	n/a	n/a	0.8	n/a	n/a	12.5
1989	0.0	0.9	n/a	n/a	15.1	n/a	n/a	95.7	n/a	n/a	0.3	n/a	n/a	15.6
1990	0.0	0.9	n/a	n/a	21.2	n/a	n/a	107.6	n/a	n/a	1.3	n/a	n/a	14.6
1991	0.0	2.7	n/a	n/a	9.8	n/a	n/a	77.5	n/a	n/a	2.5	n/a	n/a	15.7
1992	0.0	3.4	2.8	3.6	6.4	37.6	22.9	60.5	1.3	1.8	3.1	8.8	9.4	18.2
1993	0.0	6.6	3.7	3.8	7.5	32.2	29.2	61.4	0.3	0.5	0.8	8.3	6.0	14.3
1994	0.0	11.1	4.1	2.5	6.6	29.5	20.1	49.6	1.0	0.2	1.2	5.8	7.0	12.8
1995	0.0	13.5	3.0	3.1	6.1	32.4	27.9	60.3	0.6	0.4	1.0	9.4	8.0	17.4
1996	0.0	13.2	4.1	7.0	11.1	44.3	41.5	85.8	0.5	0.9	1.4	9.8	7.0	16.8
1997	0.0	15.1	6.9	9.8	16.7	62.8	54.7	117.5	0.8	1.2	2.0	9.1	6.5	15.6
1998	0.0	16.9	12.3	23.4	35.7	70.9	66.2	137.1	0.7	0.6	1.3	10.7	6.7	17.4
1999	0.0	20.8	31.0	18.8	49.8	99.9	59.0	158.9	4.7	0.3	5.0	21.7	9.5	31.2
2000	0.0	25.6	21.2	25.7	46.9	99.6	58.2	157.8	0.1	0.4	0.5	10.9	13.7	24.6
2001	0.0	29.8	19.1	20.5	39.6	82.5	49.7	132.2	0.5	0.5	1.0	15.5	15.6	31.1
2002	0.0	15.0	22.3	17.6	39.9	71.8	53.9	125.7	0.6	0.5	1.1	11.7	6.4	18.1
2003	0.0	31.5	11.8	18.2	30.0	60.3	56.4	116.7	0.4	2.2	2.6	16.2	12.1	28.3
2004	0.0	26.2	41.1	63.2	104.3	75.1	76.4	151.5	1.5	0.8	2.3	13.2	18.0	31.2
2005	0.0	34.6	53.6	113.7	167.3	78.9	82.5	161.4	0.8	0.8	1.6	20.0	19.1	39.1
2006	0.0	38.3	43.1	32.0	75.1	73.3	63.0	136.3	2.2	3.8	6.0	21.3	16.3	37.6
2007	0.0	32.1	15.0	23.3	38.3	76.2	67.7	143.9	8.1	2.4	10.5	16.8	13.3	30.1
2008	0.0	33.9	16.0	16.5	32.5	79.8	71.3	151.1	10.0	5.6	15.6	22.1	18.3	40.4
2009	0.0	22.7	6.6	10.9	17.5	60.2	27.9	88.1	1.3	5.2	6.5	43.6	-2.1	41.5
2010	0.0	23.4	6.2	11.7	17.9	65.1	62.2	127.3	2.2	2.5	4.7	24.4	23.1	47.5
2011	0.0	23.9	8.9	8.3	17.2	57.8	59.8	117.6	1.3	9.9	11.2	33.7	14.6	48.3
2012	0.0	20.6	7.8	7.7	15.5	92.3	60.1	152.4	1.9	1.5	3.4	28.3	19.3	47.6
2013	0.0	15.5	10.7	11.7	22.4	75.2	52.5	127.7	1.2	1.0	2.2	27.5	40.2	67.7
2014	0.0	18.9	8.9	11.1	20.0	75.5	67.4	142.9	3.1	2.1	5.2	39.5	14.1	53.6
2015	0.0	13.6	9.1	9.8	18.9	67.0	59.5	126.5	1.2	1.3	2.5	20.4	10.8	31.2
2016	0.0	15.4	8.1	25.3	33.4	71.9	60.5	132.4	16.5	0.7	17.2	23.4	15.1	38.5

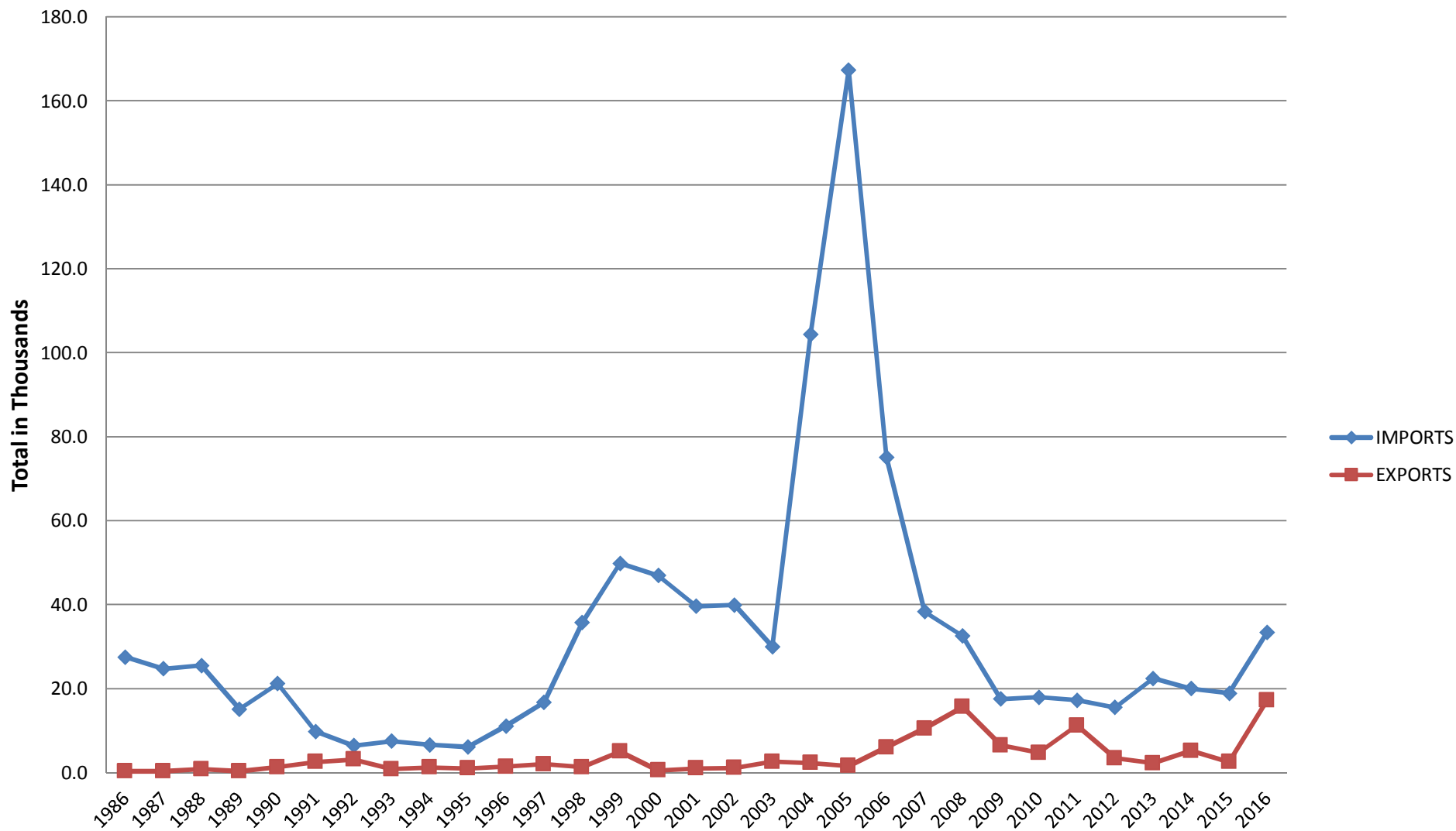
Source: Business & Trade Statistics/UK Manufacturers

Data in Thousands

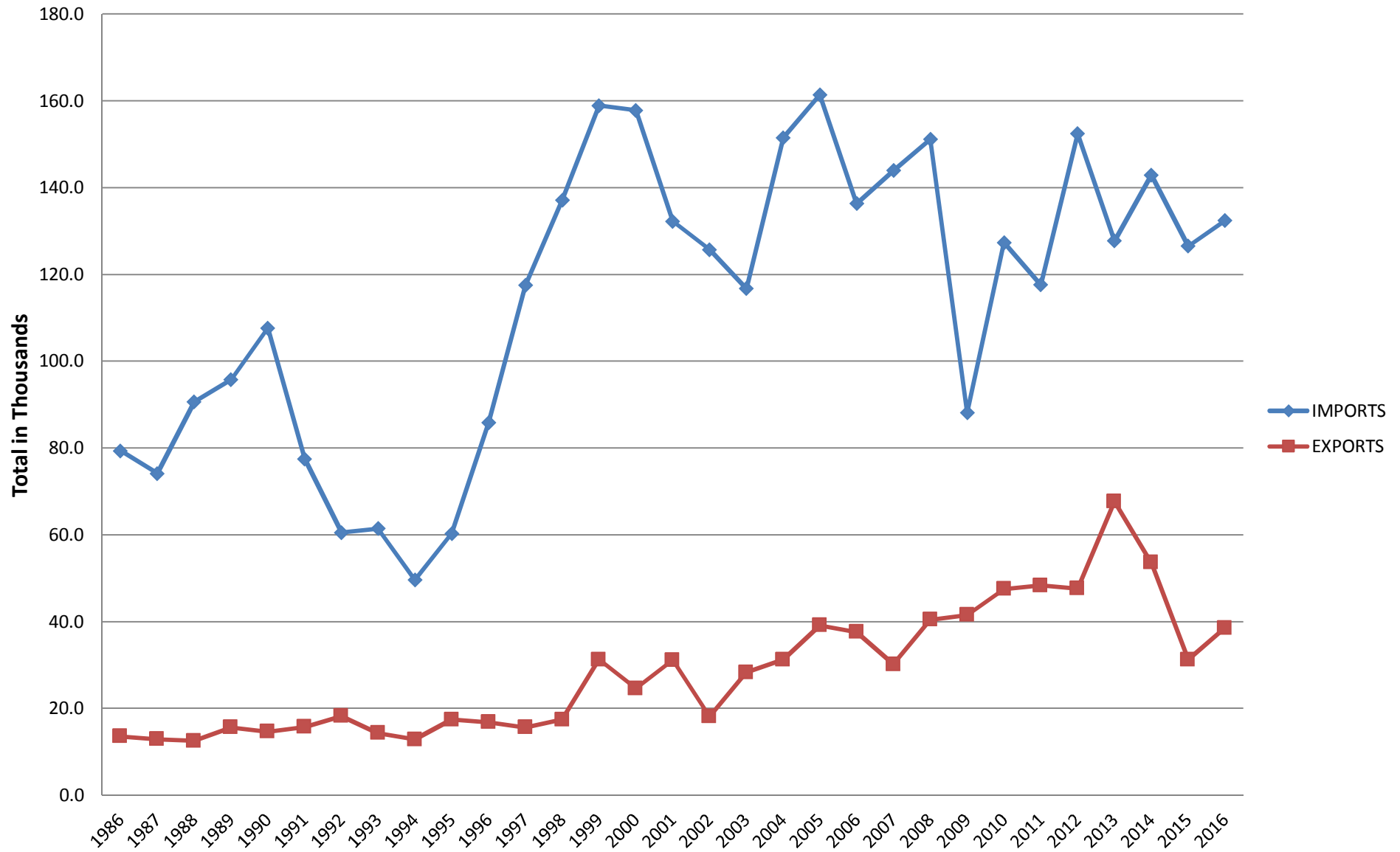
Production - Mopeds & Motorcycles



Imports & Exports - Mopeds



Import & Export - Motorcycles



Pocket Guide

Brief Terms and Conditions

All Rights Reserved. No part of this work may be reproduced, stored in a retrieval system, or transmitted, in any form or by any means, electronic, mechanical, photocopying, recording or otherwise, without prior permission of the author. For the avoidance of doubt, title, copyright and all other proprietary rights in the MOTORCYCLE REGISTRATION DATA including any part or parts thereof as published in either electronic media or eye readable format and all copies thereof shall remain vested in the MCI, and the subscriber shall not be permitted to copy, distribute, disclose, lend, hire, licence, sell or reproduce the same in any way except as provided for in the full terms and conditions. The full terms and conditions which apply to the sale and supply of MOTORCYCLE REGISTRATION DATA reports supplied by the Motor Cycle Industry Association Limited (MCI) are provided to bonafide subscribers and available from MCI on request. The subscriber is permitted to produce only such copies of the MOTORCYCLE REGISTRATION DATA supplied under the full terms and conditions as are necessary for their own INTERNAL commercial operational use. Such use is therefore limited to the address to which the MOTORCYCLE REGISTRATION DATA is sent by MCI, the MOTORCYCLE REGISTRATION DATA supplied by MCI or any part or parts thereof whether in eye readable or electronic media format and all copies thereof are confidential and shall not be divulged in whole or in part to any third party by the subscriber or their employees, servants or agents without the prior written consent of the MCI. Whilst every care is taken by the MCI in the compilation and creation of the information contained in the MOTORCYCLE REGISTRATION DATA, whether it is in an eye readable or electronic media format, no responsibility whatsoever can be accepted for any errors or omissions whether arising from negligence, breach of contract or howsoever, or for any loss of use, profits, contracts or any other indirect or consequential loss or damage howsoever caused.

**The Motor Cycle Industry Association Limited No 1 Rye Hill
Office Park, Allesley, Coventry CV5 9AB Registered in England
No. 1113282.**