

THE
MOTOR CYCLE
INDUSTRY
ASSOCIATION

2018

Statistical Pocket Guide v3

The UK Motorcycle Industry in a Nutshell

Based on data available at the time of production

Definitions

Moped

In law, a two or three* wheeled vehicle, having a maximum speed of 28 mph, maximum engine capacity 50cm³ or maximum power of 4kW. Rider must be aged 16 or over. ECWVTA Categories L1 & L2.

Motorcycle

In law, a two or three* wheeled vehicle that is not a Moped. Riders must be aged 17 years or over. ECWVTA Categories L3 & L4.

Tricycle

In law, a three or four* wheeled vehicle with symmetrically arranged wheels, that is not a Moped and is less than 1000kg. ECWVTA Category L5.

Adventure (including Supermoto)

These bikes are similar in style to enduro motorcycles but are predominantly designed and capable for on-road use. Often they will have features similar to machines included in the Touring category e.g. fairings, luggage carrying capacity etc.

Custom

These machines include 'cruisers' and 'choppers'. They have flat but typically feature high handlebars, low seat height and forward footrests. Body panels and fittings contain high polished chrome content.

Naked

Machines are built to a basic specification with no fairing (or only a small handlebar fairing) and an upright riding position. Engines are large to medium and often called retro.

Scooter

Have an engine, as an integral part of the rear suspension or the chassis is a step-through type, irrespective of cc or wheel size. Includes all types of transmission. Can be a Moped, Motorcycle or Tricycle.

Sport/Touring

Machines that fit between Supersport and Touring bikes categories. Typical features include full or partial fairings and practical rider and pillion seating with low to medium ride handlebars. Tend to have medium to large capacity engines.

Supersport

These machines are designed to mimic or directly replicate racing bikes. They normally have full fairings and low handlebars and are sometimes referred to as race replicas.

Touring

Bikes generally have large engines and are designed for long-distance riding. Typical features include a more comfortable seating position for rider and pillion, luggage carrying capability and weather protection, such as fairings with a fixed or adjustable windscreen.

Trail/Enduro

These bikes encompass trials, enduro and trail bikes with an off-road or cross-country capability.

Notes

* Where additional wheels are present, ie 3 wheels on a motorcycle, they are considered to be a single point of contact, in most cases.

UK REGISTRATIONS

ANNUAL NEW MOTORCYCLE & MOPED REGISTRATIONS

Source: MCI/MCRIS

MOTORCYCLES	2008	% Change	2009	% Change	2010	% Change	2011	% Change	2012	% Change	2013	% Change	2014	% Change	2015	% Change	2016	% Change	2017
0 - 100cc	2110	-61.6%	810	-35.9%	519	-24.7%	391	-31.5%	268	-39.2%	163	-42.3%	94	12.8%	106	131.1%	245	-37.6%	153
101 - 125cc	38456	-23.6%	29385	-5.9%	27662	17.3%	32442	8.7%	35270	-3.2%	34128	11.0%	37871	15.5%	43750	15.8%	50658	-37.6%	31610
126 - 500cc	10126	-28.3%	7264	-18.6%	5910	-3.0%	5732	6.8%	6123	40.2%	8584	7.7%	9247	15.3%	10662	23.5%	13164	-10.8%	11738
501 - 700cc	20752	-8.0%	19083	-28.1%	13719	-25.9%	10166	6.5%	10826	-11.9%	9539	-3.2%	9232	3.6%	9568	12.5%	10764	-19.1%	8713
701 - 900cc	8937	-5.8%	8416	-14.8%	7174	19.9%	8602	-7.9%	7924	7.8%	8544	34.1%	11457	26.9%	14542	-12.0%	12795	5.3%	13471
Over 900cc	34242	-12.6%	29941	-11.8%	26406	-16.4%	22074	-10.1%	19844	1.9%	20221	12.6%	22778	15.0%	26185	19.7%	31350	-0.3%	31258
Total Motorcycles	114,623	-17.2	94,899	-14.2	81,390	-2.4	79,407	1.1	80,255	1.2	81,179	11.7	90,679	15.6	104,813	13.5	118,976	-18.5	96,943
Total Mopeds	25065	-33.8%	16587	-12.5%	14517	-0.5%	14443	-7.1%	13412	-20.0%	10730	-1.2%	10598	-11.8%	9347	-6.6%	8726	-11.6%	7712
Total PTW	139,688	-20.2	111,486	-14.0	95,907	-2.1	93,850	-0.2	93,667	-1.9	91,909	10.2	101,277	12.7	114,160	11.9	127,702	-18.0	104,655

ANNUAL NEW MOTORCYCLE REGISTRATIONS BY STYLE

Source: MCI/MCRIS

MOTORCYCLE STYLE	2008	% Change	2009	% Change	2010	% Change	2011	% Change	2012	% Change	2013	% Change	2014	% Change	2015	% Change	2016	% Change	2017
Scooter	22631	-25.6%	16829	-6.2%	15787	20.2%	18974	10.8%	21026	-4.4%	20091	7.1%	21516	6.7%	22967	19.6%	27468	-32.5%	18537
Trail/Enduro	7308	-26.2%	5396	-13.2%	4685	-13.3%	4060	3.4%	4198	8.6%	4558	8.1%	4928	13.2%	5580	20.6%	6732	-11.8%	5935
Naked	21454	-0.7%	21300	-16.2%	17839	-3.6%	17203	0.0%	17197	4.4%	17951	32.1%	23717	26.9%	30099	18.4%	35647	-12.4%	31243
Sport/Tour	10091	-17.4%	8338	-9.8%	7518	-32.4%	5084	-13.8%	4384	-7.9%	4037	1.5%	4097	0.3%	4110	-4.0%	3946	-24.9%	2962
Supersport	23489	-19.3%	18965	-24.8%	14257	-9.8%	12855	-3.8%	12361	-5.2%	11719	1.8%	11931	11.6%	13315	1.3%	13485	-30.1%	9432
Touring	4204	-12.8%	3667	-11.4%	3249	-14.5%	2778	-22.9%	2142	27.4%	2728	13.0%	3082	-15.7%	2598	-6.4%	2431	-6.5%	2273
Custom	11126	-16.4%	9297	-10.6%	8308	-5.2%	7873	-13.0%	6851	6.5%	7298	11.3%	8126	14.1%	9269	14.3%	10590	-24.1%	8034
Adventure	13304	-20.8%	10538	-11.7%	9310	9.6%	10207	15.3%	11765	7.1%	12603	4.2%	13129	26.8%	16654	11.1%	18500	-0.6%	18386
Unspecified	1016	-44.0%	569	-23.2%	437	-14.6%	373	-11.3%	331	-41.4%	194	-21.1%	153	44.4%	221	-19.9%	177	-20.3%	141
Total Motorcycles	114,623	-17.2	94,899	-14.2	81,390	-2.4	79,407	1.1	80,255	1.2	81,179	11.7	90,679	15.6	104,813	13.5	118,976	-18.5	96,943

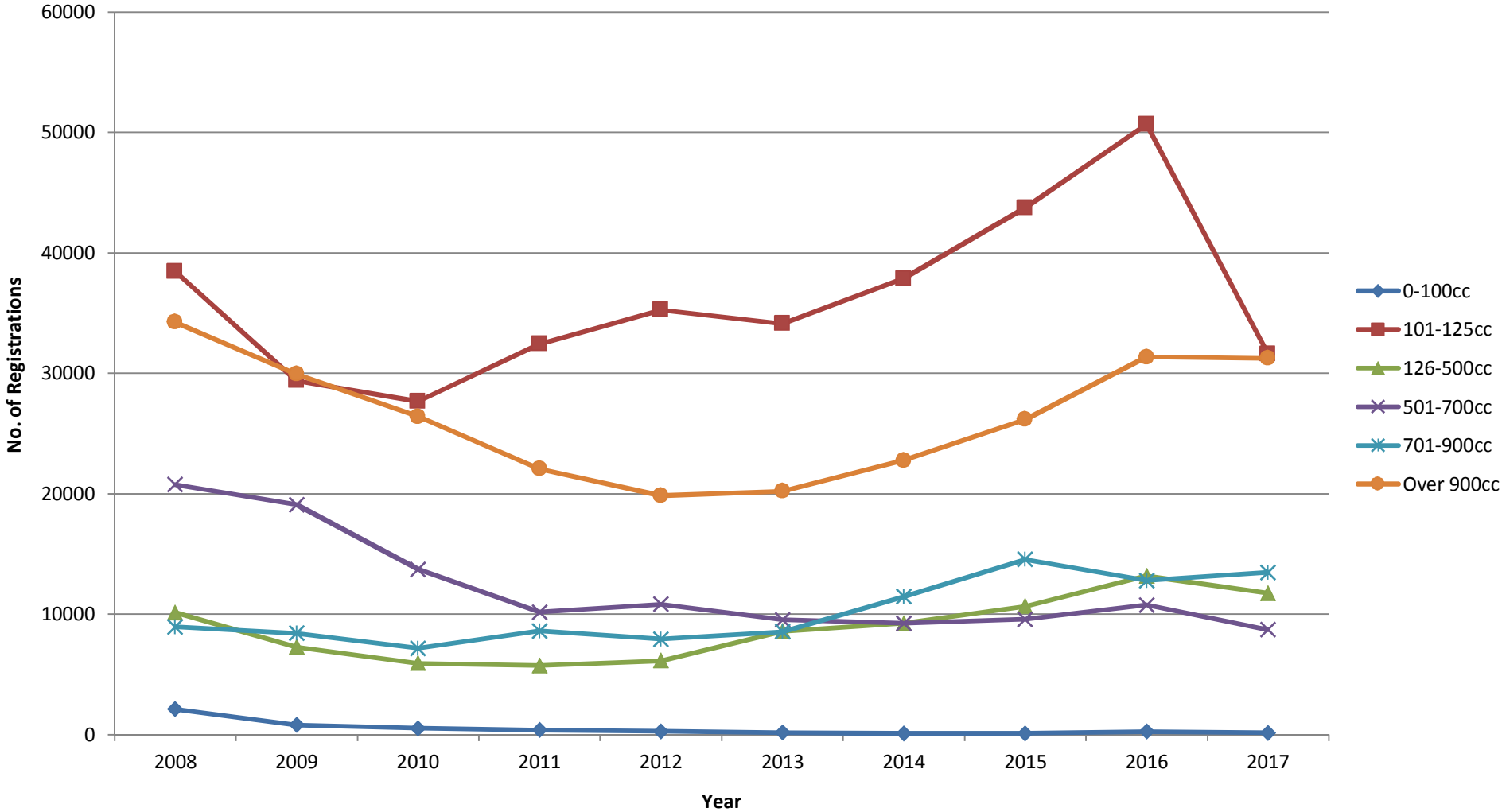
ANNUAL NEW MOPED REGISTRATIONS BY STYLE

Source: MCI/MCRIS

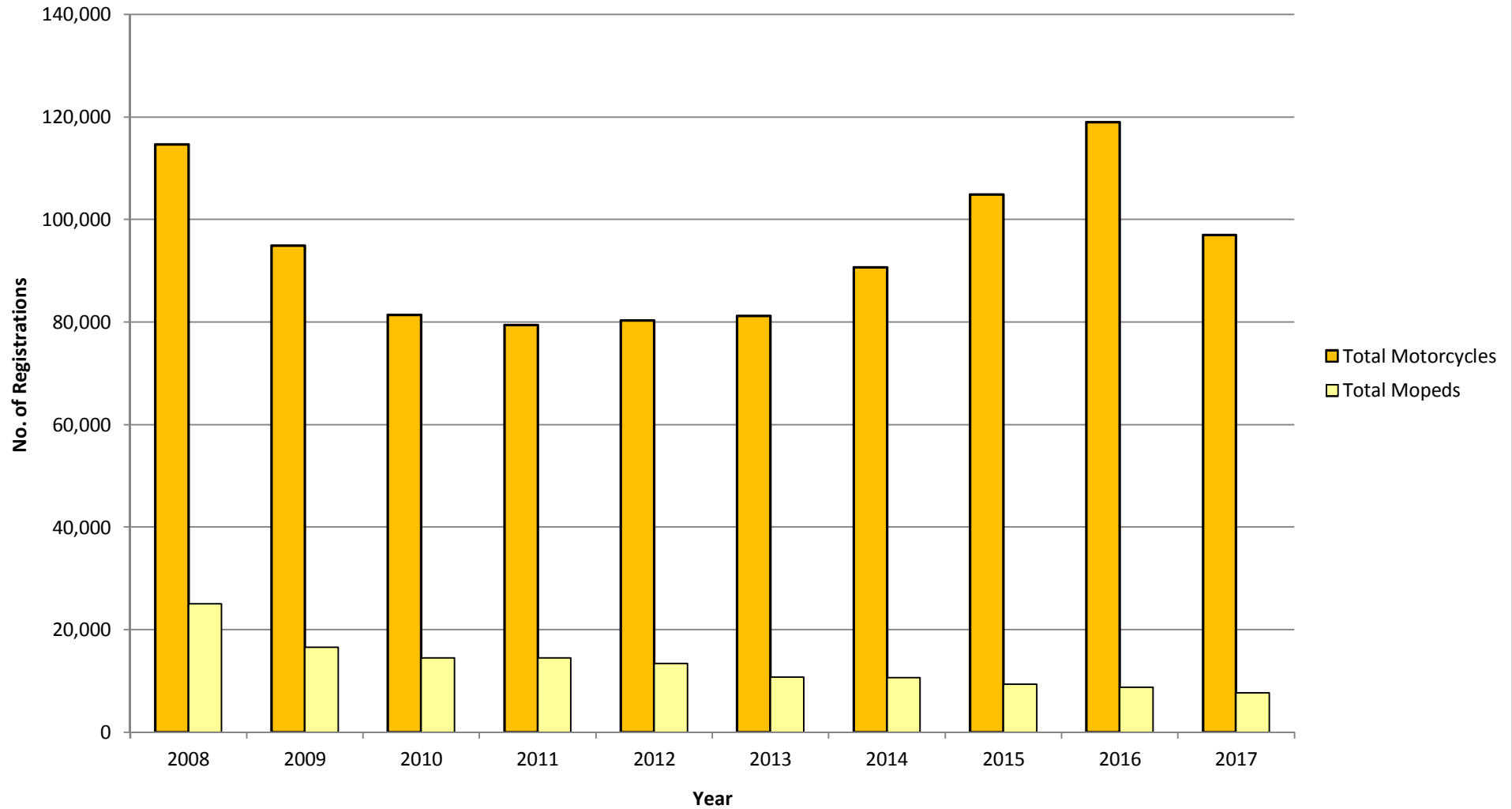
MOPED STYLE	2008	% Change	2009	% Change	2010	% Change	2011	% Change	2012	% Change	2013	% Change	2014	% Change	2015	% Change	2016	% Change	2017
Sports	1441	-38.0%	894	-27.5%	648	-11.6%	573	-2.6%	558	-21.3%	439	3.6%	455	-15.6%	384	-8.6%	351	-23.6%	268
Scooter	22430	-33.3%	14955	-11.9%	13176	1.5%	13379	-6.2%	12549	-20.6%	9969	-2.1%	9764	-12.0%	8597	-8.0%	7909	-16.4%	6612
Naked	1100	-37.8%	684	-4.8%	651	-30.4%	453	-36.6%	287	10.1%	316	16.8%	369	-6.0%	347	31.1%	455	76.3%	802
Unspecified	94	-42.6%	54	-22.2%	42	-9.5%	38	-52.6%	18	-66.7%	6	66.7%	10	90.0%	19	-42.1%	11	172.7%	30
Total Mopeds	25,065	-33.8	16,587	-12.5	14,517	-0.5	14,443	-7.1	13,412	-20.0	10,730	-1.2	10,598	-11.8	9,347	-6.6	8,726	-11.6	7,712

N.B. All the data in this report is refreshed annually to reflect improvements in data mostly related to style
 Registrations = Registrations of new powered two wheelers for the road.

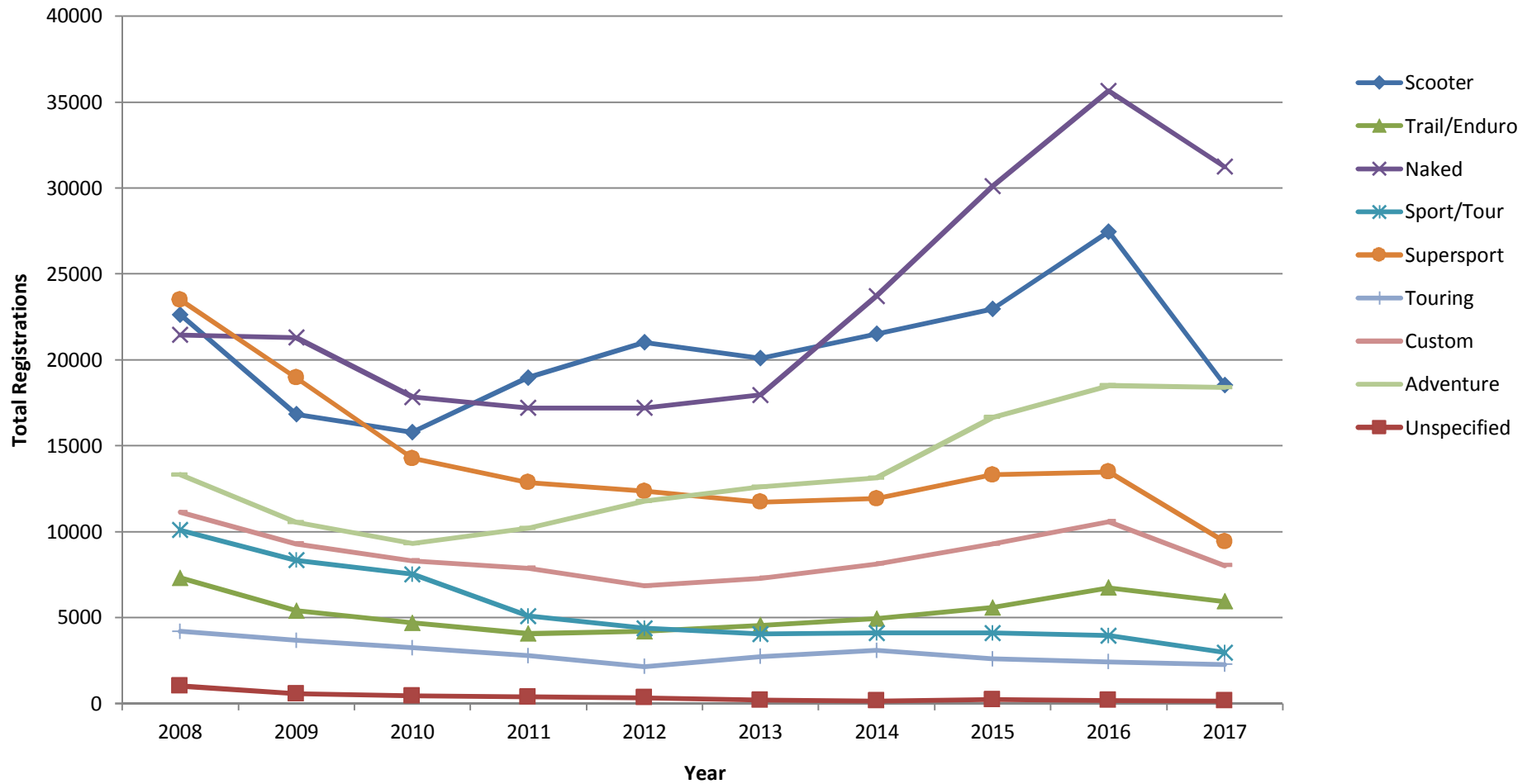
Annual New UK Motorcycle Registrations by CC



Annual New UK Motorcycle and Moped Registrations



Annual New Motorcycle Registrations By Style



Moped & Motorcycle Parc

TWO WHEELED VEHICLES IN USE (PARC) IN GREAT BRITAIN

Source: MCI / MCRIS

MOTORCYCLES	2008	% Change	2009	% Change	2010	% Change	2011	% Change	2012	% Change	2013	% Change	2014	% Change	2015	% Change	2016	% Change	2017
0 - 100 cc	47.0	-2.6	45.8	-8.3	42.0	-3.8	40.4	-6.2	37.9	-5.0	36.0	-6.7	33.6	-8.0	30.9	-6.5	28.9	-6.9	26.9
101 - 125 cc	230.0	6.1	244.0	1.8	248.3	5.2	261.3	5.7	276.3	3.1	285.0	3.3	294.5	1.6	299.3	4.9	314.1	-3.0	304.7
126 - 500 cc	214.0	0.7	215.4	-1.1	213.0	-0.1	212.7	0.1	212.9	3.1	219.5	0.9	221.4	-0.3	220.8	2.1	225.4	1.2	228.0
501 - 700 cc	290.9	2.2	297.2	-2.3	290.4	-2.3	283.7	-2.0	277.9	-1.1	274.9	-1.7	270.1	-2.7	262.8	-1.1	260.0	-2.6	253.3
701 - 900 cc	155.1	1.5	157.4	-1.8	154.5	0.3	155.0	-0.9	153.6	1.3	155.6	2.9	160.1	3.8	166.2	3.2	171.5	3.4	177.3
Over 900 cc	357.4	5.1	375.7	0.6	378.1	-0.2	377.2	-0.7	374.4	0.9	377.8	1.8	384.7	1.7	391.2	3.5	404.9	2.5	415.2
Total Motorcycles	1294.4	3.2	1335.5	-0.7	1326.3	0.3	1330.3	0.2	1333.0	1.2	1348.8	1.2	1364.4	0.5	1371.2	2.5	1404.8	0.0	1405.4
Scooters +	INCL		INCL		INCL		INCL		INCL		INCL		INCL		INCL		INCL		INCL
Total Mopeds	157.5	-4.3	150.8	-6.3	141.3	-2.0	138.5	-3.2	134.1	-7.2	124.5	-10.0	112.1	-13.5	97.0	-10.3	87.0	-10.3	78.0

Data in Thousands.

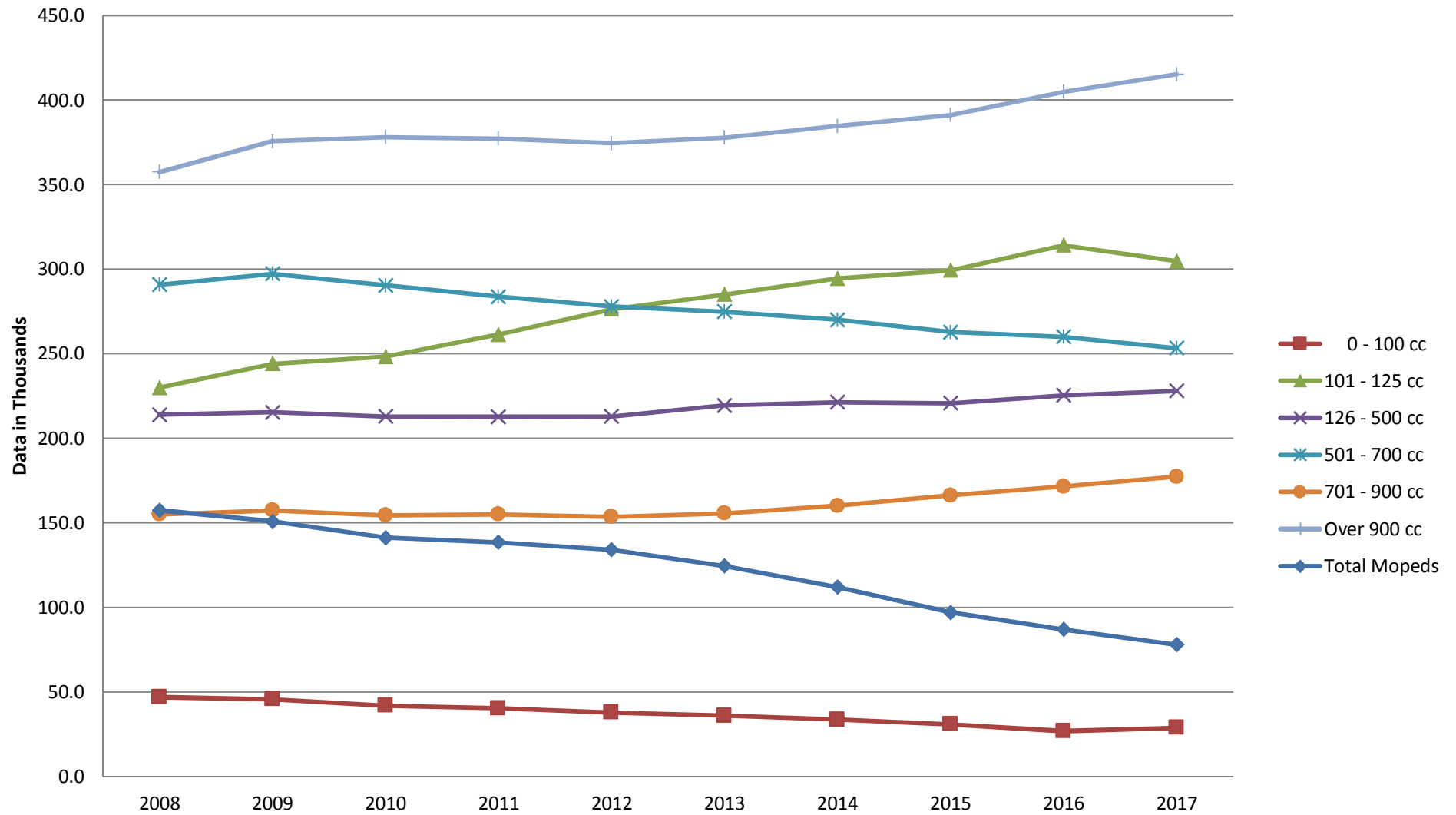
Data only available 6 months after the period it relates to.

Source: Society of Motor Manufacturers and Traders (SMMT) December Census.

PARC = Number of vehicles currently licensed including vehicles previously licensed in preceding 6 months.

+Scooter registrations included within relevant category (i.e. moped or motor cycle).

Moped & Motorcycle Parc



PRODUCTION, IMPORTS & EXPORTS

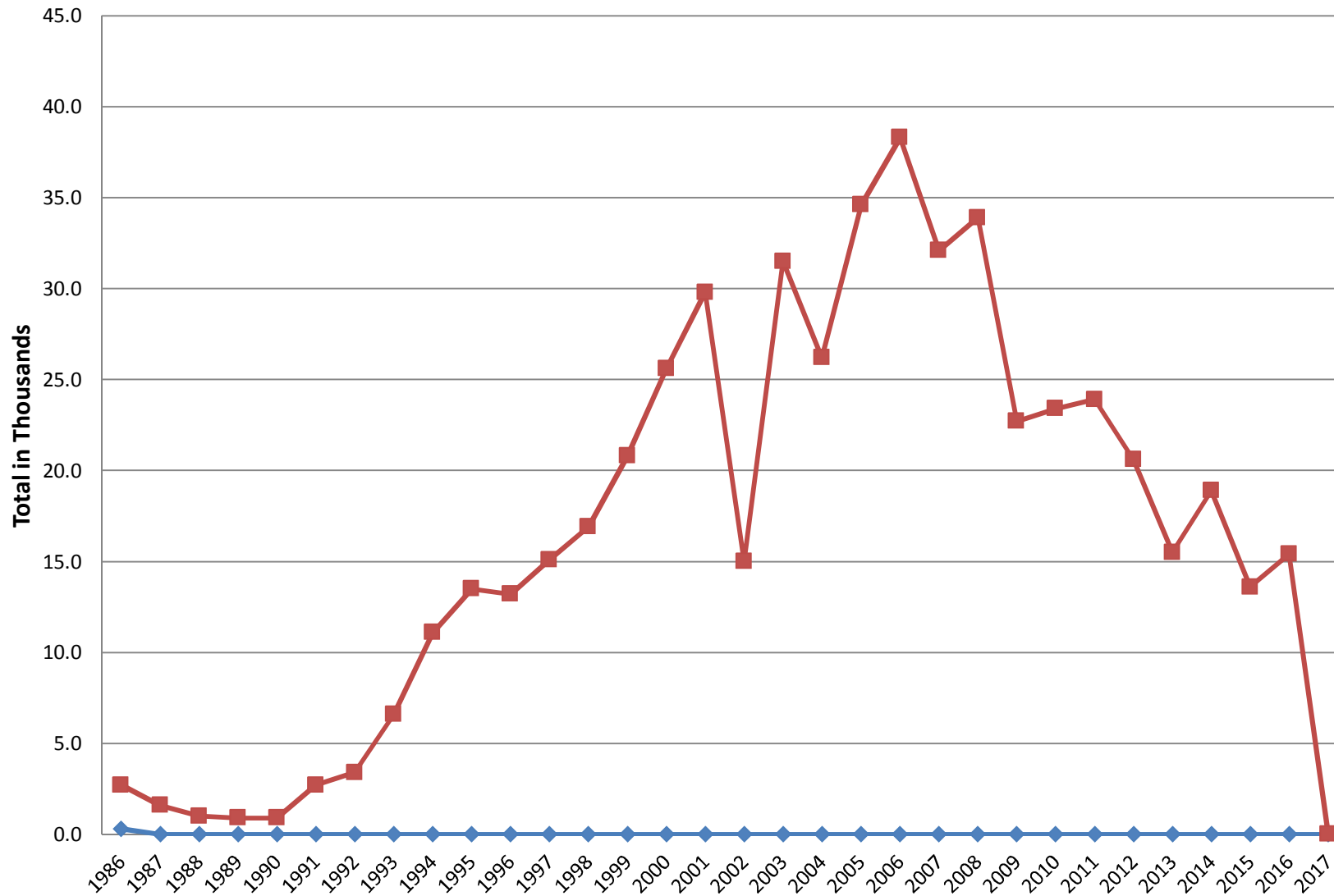
PRODUCTION, IMPORTS & EXPORTS														
YEAR	PRODUCTION		IMPORTS						EXPORTS (including re-exports)					
	MOPED	MC's	MOPEDS			MOTORCYCLES			MOPEDS			MOTORCYCLES		
	TOTAL	TOTAL	JAN - JUN	JUL - DEC	TOTAL	JAN - JUN	JUL - DEC	TOTAL	JAN - JUN	JUL - DEC	TOTAL	JAN - JUN	JUL - DEC	TOTAL
1986	0.3	2.7	n/a	n/a	27.5	n/a	n/a	79.3	n/a	n/a	0.3	n/a	n/a	13.5
1987	0.0	1.6	n/a	n/a	24.7	n/a	n/a	74.1	n/a	n/a	0.3	n/a	n/a	12.9
1988	0.0	1.0	n/a	n/a	25.5	n/a	n/a	90.6	n/a	n/a	0.8	n/a	n/a	12.5
1989	0.0	0.9	n/a	n/a	15.1	n/a	n/a	95.7	n/a	n/a	0.3	n/a	n/a	15.6
1990	0.0	0.9	n/a	n/a	21.2	n/a	n/a	107.6	n/a	n/a	1.3	n/a	n/a	14.6
1991	0.0	2.7	n/a	n/a	9.8	n/a	n/a	77.5	n/a	n/a	2.5	n/a	n/a	15.7
1992	0.0	3.4	2.8	3.6	6.4	37.6	22.9	60.5	1.3	1.8	3.1	8.8	9.4	18.2
1993	0.0	6.6	3.7	3.8	7.5	32.2	29.2	61.4	0.3	0.5	0.8	8.3	6.0	14.3
1994	0.0	11.1	4.1	2.5	6.6	29.5	20.1	49.6	1.0	0.2	1.2	5.8	7.0	12.8
1995	0.0	13.5	3.0	3.1	6.1	32.4	27.9	60.3	0.6	0.4	1.0	9.4	8.0	17.4
1996	0.0	13.2	4.1	7.0	11.1	44.3	41.5	85.8	0.5	0.9	1.4	9.8	7.0	16.8
1997	0.0	15.1	6.9	9.8	16.7	62.8	54.7	117.5	0.8	1.2	2.0	9.1	6.5	15.6
1998	0.0	16.9	12.3	23.4	35.7	70.9	66.2	137.1	0.7	0.6	1.3	10.7	6.7	17.4
1999	0.0	20.8	31.0	18.8	49.8	99.9	59.0	158.9	4.7	0.3	5.0	21.7	9.5	31.2
2000	0.0	25.6	21.2	25.7	46.9	99.6	58.2	157.8	0.1	0.4	0.5	10.9	13.7	24.6
2001	0.0	29.8	19.1	20.5	39.6	82.5	49.7	132.2	0.5	0.5	1.0	15.5	15.6	31.1
2002	0.0	15.0	22.3	17.6	39.9	71.8	53.9	125.7	0.6	0.5	1.1	11.7	6.4	18.1
2003	0.0	31.5	11.8	18.2	30.0	60.3	56.4	116.7	0.4	2.2	2.6	16.2	12.1	28.3
2004	0.0	26.2	41.1	63.2	104.3	75.1	76.4	151.5	1.5	0.8	2.3	13.2	18.0	31.2
2005	0.0	34.6	53.6	113.7	167.3	78.9	82.5	161.4	0.8	0.8	1.6	20.0	19.1	39.1
2006	0.0	38.3	43.1	32.0	75.1	73.3	63.0	136.3	2.2	3.8	6.0	21.3	16.3	37.6
2007	0.0	32.1	15.0	23.3	38.3	76.2	67.7	143.9	8.1	2.4	10.5	16.8	13.3	30.1
2008	0.0	33.9	16.0	16.5	32.5	79.8	71.3	151.1	10.0	5.6	15.6	22.1	18.3	40.4
2009	0.0	22.7	6.6	10.9	17.5	60.2	27.9	88.1	1.3	5.2	6.5	43.6	-2.1	41.5
2010	0.0	23.4	6.2	11.7	17.9	65.1	62.2	127.3	2.2	2.5	4.7	24.4	23.1	47.5
2011	0.0	23.9	8.9	8.3	17.2	57.8	59.8	117.6	1.3	9.9	11.2	33.7	14.6	48.3
2012	0.0	20.6	7.8	7.7	15.5	92.3	60.1	152.4	1.9	1.5	3.4	28.3	19.3	47.6
2013	0.0	15.5	10.7	11.7	22.4	75.2	52.5	127.7	1.2	1.0	2.2	27.5	40.2	67.7
2014	0.0	18.9	8.9	11.1	20.0	75.5	67.4	142.9	3.1	2.1	5.2	39.5	14.1	53.6
2015	0.0	13.6	9.1	9.8	18.9	67.0	59.5	126.5	1.2	1.3	2.5	20.4	10.8	31.2
2016	0.0	15.4	8.1	25.3	33.4	71.9	60.5	132.4	16.5	0.7	17.2	23.4	15.1	38.5
2017	0.0	6.9*			0.0			0.0			0.0			0.0

Source: Business & Trade Statistics/UK Manufacturers

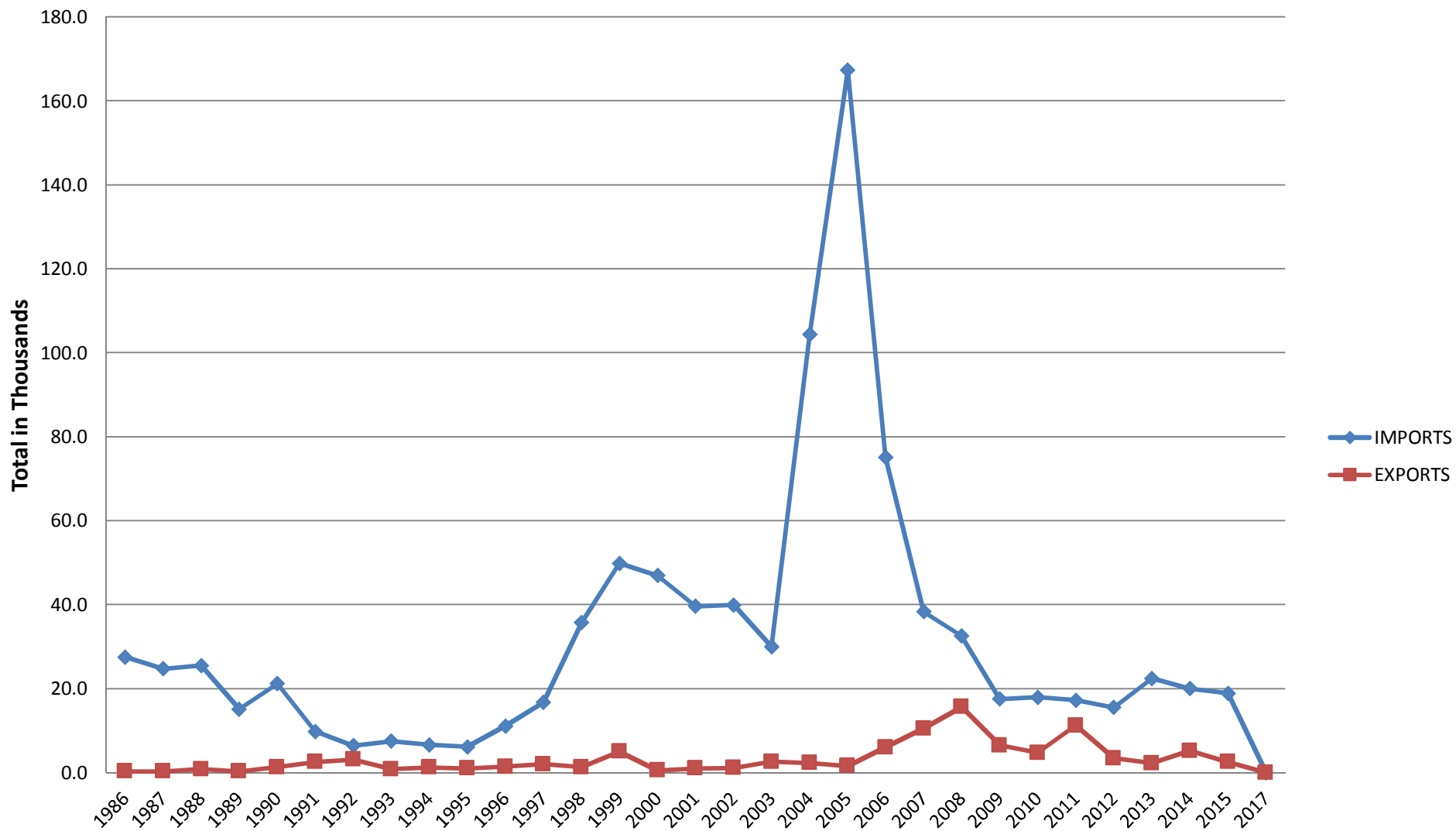
*Change from Euro 3 to Euro 4

Data in Thousands

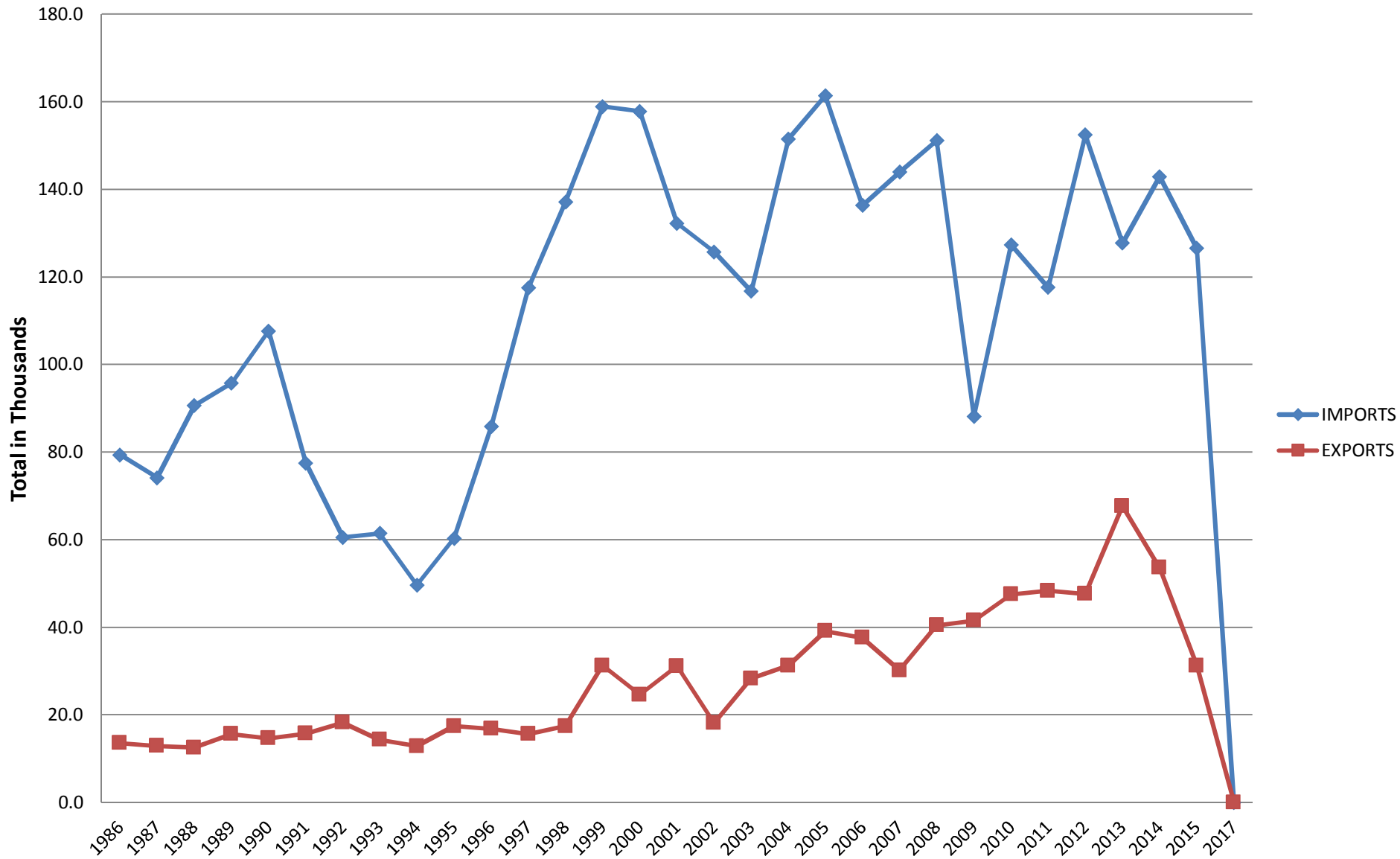
Production - Mopeds & Motorcycles



Imports & Exports - Mopeds



Import & Export - Motorcycles



Pocket Guide

Brief Terms and Conditions

All Rights Reserved. No part of this work may be reproduced, stored in a retrieval system, or transmitted, in any form or by any means, electronic, mechanical, photocopying, recording or otherwise, without prior permission of the author. For the avoidance of doubt, title, copyright and all other proprietary rights in the MOTORCYCLE REGISTRATION DATA including any part or parts thereof as published in either electronic media or eye readable format and all copies thereof shall remain vested in the MCI, and the subscriber shall not be permitted to copy, distribute, disclose, lend, hire, licence, sell or reproduce the same in any way except as provided for in the full terms and conditions. The full terms and conditions which apply to the sale and supply of MOTORCYCLE REGISTRATION DATA reports supplied by the Motor Cycle Industry Association Limited (MCI) are provided to bonafide subscribers and available from MCI on request. The subscriber is permitted to produce only such copies of the MOTORCYCLE REGISTRATION DATA supplied under the full terms and conditions as are necessary for their own INTERNAL commercial operational use. Such use is therefore limited to the address to which the MOTORCYCLE REGISTRATION DATA is sent by MCI, the MOTORCYCLE REGISTRATION DATA supplied by MCI or any part or parts thereof whether in eye readable or electronic media format and all copies thereof are confidential and shall not be divulged in whole or in part to any third party by the subscriber or their employees, servants or agents without the prior written consent of the MCI. Whilst every care is taken by the MCI in the compilation and creation of the information contained in the MOTORCYCLE REGISTRATION DATA, whether it is in an eye readable or electronic media format, no responsibility whatsoever can be accepted for any errors or omissions whether arising from negligence, breach of contract or howsoever, or for any loss of use, profits, contracts or any other indirect or consequential loss or damage howsoever caused.

**The Motor Cycle Industry Association Limited No 1 Rye Hill
Office Park, Allesley, Coventry CV5 9AB Registered in England
No. 1113282.**